

HUNTERS®

HERE TO GET *you* THERE



Moorfield Crescent

Pudsey, LS28 8BR

£260,000



Council Tax: C



24 Moorfield Crescent

Pudsey, LS28 8BR

£260,000



- Immaculate end of terrace house
- Quiet cul-de-sac location
- Fully tiled bathroom
- Sunny reception room
- Integrated high gloss kitchen/diner
- Three generous bedrooms
- Modern fully tiled bathroom
- Beautifully landscaped garden
- Ample off road parking
- Close to public transport/shops

Welcome to this superb end of terrace house, presently on the market and absolutely perfect for first-time buyers or families. Tucked away in a quiet, sought-after cul-de-sac location, this home is in close proximity to public transport links, local amenities, green spaces, and has various walking and cycling routes at your doorstep.

Let's start with the welcoming entrance hallway that leads you into the heart of the home. The LIVING room is a beautiful, sunny and light space with an elegant panel finish, just perfect for relaxing or entertaining. The stylishly presented, integrated KITCHEN offers high gloss units, ample worktops with sink and quality appliances. It also boasts a generous dining space for family meals or entertaining friends.

The property offers THREE generous bedrooms, two of which are doubles, offering plenty of space for all the family. The third bedroom could also serve as a home office, perfect for those who work from home or need a quiet study space. The fully tiled BATHROOM is a modern delight with an overhead shower, offering a serene space to unwind after a long day.

Stepping outside, you are greeted with a beautifully landscaped GARDEN that provides a tranquil retreat and an ideal spot for outdoor entertaining. The property also benefits from ample off-road parking, a feature that not only adds convenience but also contributes to the stylish presentation of the home.

This house is a true gem and a credit to its current owners. Don't miss out on the opportunity to make this your new home.

The Pudsey area, with its blend of history, community spirit, and modern amenities/cafes and shops, offers an attractive and balanced lifestyle. Its excellent transport links, quality schools, and abundance of green spaces make it a highly desirable area for families, while its proximity to Leeds and Bradford ensures access to city amenities without sacrificing a sense of town charm. The town's history, friendly atmosphere, and variety of housing make it a place that suits a wide range of residents.

Tel: 0113 257 6198

ENTRANCE HALL

LIVING ROOM

12'3" x 9'10" (3.75 x 3.01)

KITCHEN/DINER

15'10" x 8'11" (4.85 x 2.73)

BEDROOM ONE

11'0" x 9'6" (3.37 x 2.90)

BEDROOM TWO

10'2" x 9'6" (3.11 x 2.90)

BEDROOM THREE

8'1" x 5'6" (2.48 x 1.68)

BATHROOM

6'1" x 5'6" (1.87 x 1.68)



Road Map



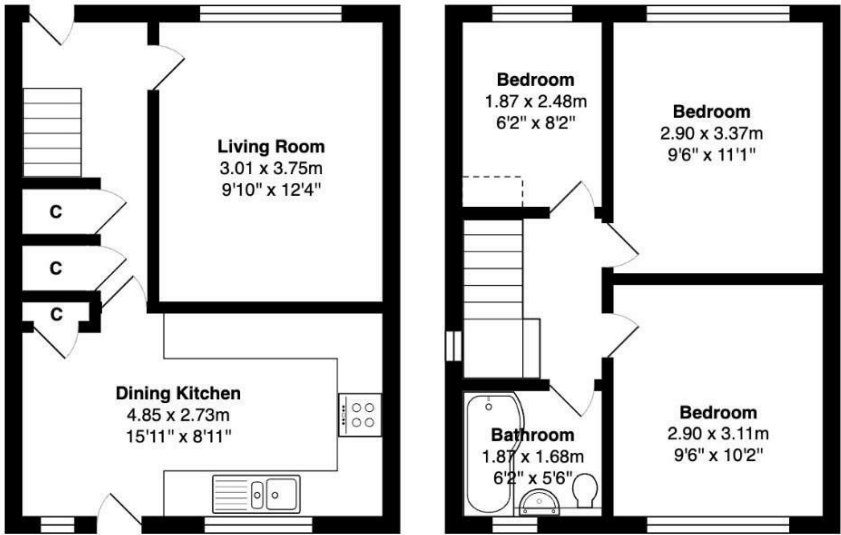
Hybrid Map



Terrain Map



Floor Plan



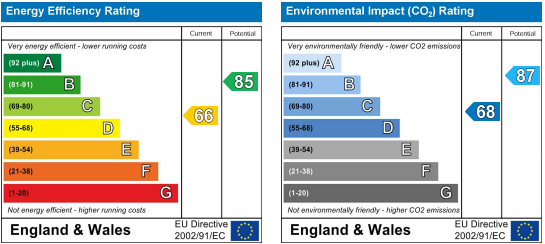
Total Area: 64.4 m² ... 693 ft²

All measurements are approximate and for display purposes only

Viewing

Please contact our Hunters Pudsey Office on 0113 257 6198 if you wish to arrange a viewing appointment for this property or require further information.

Energy Efficiency Graph



These particulars are intended to give a fair and reliable description of the property but no responsibility for any inaccuracy or error can be accepted and do not constitute an offer or contract. We have not tested any services or appliances (including central heating if fitted) referred to in these particulars and the purchasers are advised to satisfy themselves as to the working order and condition. If a property is unoccupied at any time there may be reconnection charges for any switched off/disconnected or drained services or appliances - All measurements are approximate. **THINKING OF SELLING?** If you are thinking of selling your home or just curious to discover the value of your property, Hunters would be pleased to provide free, no obligation sales and marketing advice. Even if your home is outside the area covered by our local offices we can arrange a Market Appraisal through our national network of Hunters estate agents.